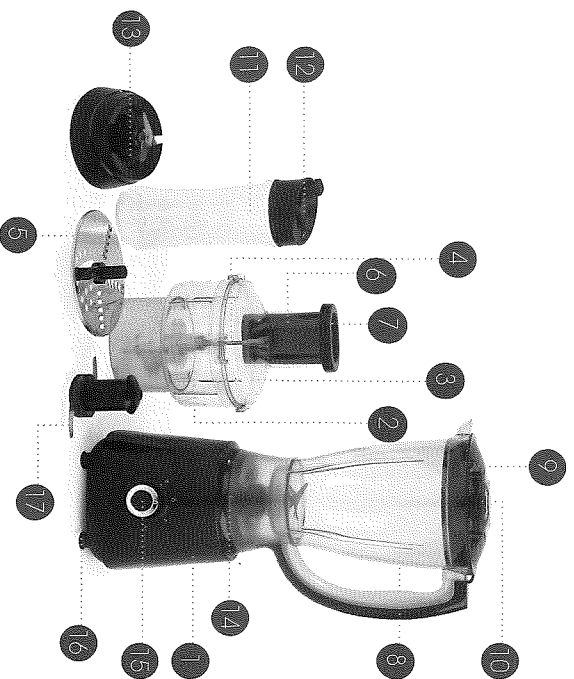


## DESCRIPTION OF PARTS



1. Blender base unit
2. Food processor bowl
3. Food processor lid
4. Pin
5. Slicing/shredding disc
6. Feeding chute
7. Food pusher
8. Blending jug
9. Blending jug lid
10. Measuring cap
11. Travel bottle
12. Travel bottle lid
13. Travel bottle blade attachment
14. Safety lock
15. Variable speed dial
16. Rubber feet
17. Chopping blade

EN | READ ALL INSTRUCTIONS AND RETAIN FOR FUTURE REFERENCE

## SAFETY INSTRUCTIONS

When using electrical appliances, basic safety precautions should always be followed. Check that the voltage indicated on the rating plate corresponds with that of the local network before connecting the appliance to the mains power supply.

Children aged from 8 years and people with reduced physical, sensory or mental capabilities or lack of experience and knowledge can use this appliance, only if they have been given supervision or instruction concerning use of the appliance in a safe way and understand the hazards involved. Children should be supervised to ensure that they do not play with the appliance.

Unless they are older than 8 and supervised, children should not perform cleaning or user maintenance. This appliance is not a toy.

This appliance contains no user serviceable parts. If the power supply cord, plug or any part of the appliance is malfunctioning, or if the appliance has been dropped or damaged, only a qualified electrician should carry out repairs. Improper repairs may place the user at risk of harm. Keep the appliance and its power supply cord out of the reach of children.

Keep hands, fingers, hair and any loose clothing away from the rotating tools of the appliance. Do not use broken or loose cutting or rotating blades.

Do not overload the appliance as the mixture level may rise during blending.

Do not leave the appliance unattended whilst connected to the mains power supply.

Do not use the appliance for anything other than its intended use. Do not use any accessories other than those supplied.

Do not place boiling water or very hot liquid in the appliance.

Always use the appliance on a stable, heat-resistant surface, at a height that is comfortable for the user.

This appliance is intended for domestic use only. It should not be used for commercial purposes.

Always use the appliance on a stable, heat-resistant surface, at a height that is comfortable for the user. This appliance is intended for domestic use only. It should not be used for commercial purposes.

**WARNING: DO NOT TOUCH SHARP BLADES.**

## CARE AND MAINTENANCE

Before attempting any cleaning or maintenance, switch off and unplug the appliance from the mains power supply and allow it to cool fully.

Wipe the main unit with a soft, damp cloth and allow to dry thoroughly.

Wash all of the accessories in warm, soapy water, then rinse and dry thoroughly.

Never touch the chopping blades; using extreme caution, clean the blades with a brush and dry carefully.

Do not immerse the blender base unit in water or any other liquid.

Do not use harsh or abrasive detergents or scourers to clean the blender, as this could cause damage.

**Note:** The blender should be cleaned after each use.

**WARNING: HANDLE THE CHOPPING ATTACHMENTS WITH CARE, AS THE BLADES ARE SHARP. EXERCISE CAUTION WHEN ATTACHING, REMOVING, CLEANING OR STORING ANY ATTACHMENTS.**

## INSTRUCTIONS FOR USE

### BEFORE FIRST USE

Wash all of the attachments in warm, soapy water, then rinse and dry thoroughly. Wipe the blender base unit with a soft, damp cloth and allow to dry thoroughly.

**Note:** When using the blender for the first time, a slight odour may be emitted. This is normal and will soon subside. Allow for sufficient ventilation around the blender.

### USING THE DELUXE BLENDER SET

All attachments must be securely fitted before use; do not attempt to remove them until the blades have stopped moving.

**STEP 1:** Switch off and unplug the blender from the mains power supply.

**STEP 2:** Position the blender base unit onto a flat, stable surface, at a height that is comfortable for the user. Check that the rubber feet are firmly planted so that the blender does not wobble during use.

**STEP 3:** Make sure that the variable speed dial is set to the off position '0'.

**WARNING: MAX. CONTINUOUS OPERATION TIME IS 30 SECONDS. LEAVE TO COOL DOWN FOR AT LEAST 3 MINUTES BEFORE USING AGAIN.**

#### WITH THE FOOD PROCESSOR BOWL

**STEP 1:** Place the food processor bowl on the blender base unit. Gently twist the food processor bowl in a clockwise direction until the arrow mark on the bowl is pointing to the 'locked' icon on the blender base unit.

is facing downwards. Align the arrow mark on the attachment with the locking symbols on the blender base unit and twist in a clockwise direction to secure in place.

**STEP 5:** Remove the blade attachment by twisting it in an anticlockwise direction and then replace it with the travel bottle lid.

**STEP 2:** Select the chosen attachment.

- For the chopper blade, place directly on the pin.
- For the slicing/shredding disc, place directly on the pin, with the blade of your choice facing up.

**STEP 3:** If using the chopping blade, add the food to be chopped into the food processor bowl. Place the lid onto the bowl and secure by aligning the tabs, pressing down firmly and twisting it in a clockwise direction until it locks into position.

**Note:** The blade and seal can be removed for easy cleaning by lifting away from the blade attachment base. Before using again, ensure that the blade and the seal are completely dry and securely fitted.

#### USING THE SPEED SETTINGS

**STEP 4:** If using the slicing/shredding disc, insert the food into the feeding chute, followed by the food pusher.

Holding the unit steady, turn the variable speed dial clockwise to the required speed setting (1-2) or anticlockwise to activate the pulse (P) setting, until the food is chopped to the preferred size.

**STEP 5:** Plug in and switch on the blender at the mains power supply.

The pulse setting provides quick bursts of speed; hold the variable speed dial in place to activate the motor and release to stop it. Turn the speed dial back to '0' and wait for the blades to stop rotating before removing any attachments.

FULL INSTRUCTION MANUAL AT  
[www.saltercookshop.com/Instruction-manuals.html](http://www.saltercookshop.com/Instruction-manuals.html)  
PRODUCT CODE: **EK4246**

**STEP 6:** Holding the processor bowl steady, rotate the control dial to the required setting until the food is chopped to the preferred size. Turn the control dial back to '0' and wait for the blades to stop rotating before removing the processor bowl lid.

**STEP 7:** To remove the processor bowl from the blender base unit, first remove the lid by pressing down firmly in the centre of the lid and twisting in an anticlockwise direction. Carefully remove the chopping attachment without touching the blade itself. Twist the processor bowl in an anticlockwise direction and pull it away from the blender base unit.

**WARNING: DO NOT OPERATE THE BLENDER WHILST EMPTY, AS THIS CAN CAUSE DAMAGE. DO NOT BLEND WARM OR HOT LIQUID OR FOOD.**

**SALTER®**  
Deluxe  
Blender Set  
QUICK START GUIDE

#### WITH THE BLENDER JUG

**STEP 1:** Place the jug on the blender base unit.

Check that the blender and its accessories are cool, clean and dry before storing in a cool, dry place. Never wrap the cord tightly around the blender; wrap it loosely to avoid causing damage.

**STEP 2:** Gently twist the blending jug in a clockwise direction until the arrow mark on the blending jug is pointing to the 'locked' icon on the blender base unit.

#### SPECIFICATIONS

**STEP 3:** Cut all of the ingredients for blending into small pieces and add them into the blending jug, along with some liquid.

Product code: EK4246  
Input: 220-240 V~ 50/60 Hz  
Output: 400 W

**STEP 4:** Secure the blending jug lid by aligning it with the top of the blending jug and gently twisting it in a clockwise direction, so that that it locks into place.

**STEP 5:** Place the measuring cap into the hole on the blending jug lid.

If this product does not reach you in an acceptable condition, please contact our Customer Services Department at [www.saltercookshop.com](http://www.saltercookshop.com). Please have your delivery note to hand as details from it will be required. If you wish to return this product, please return it to the retailer from where it was purchased with your receipt (subject to their terms and conditions).

**Note:** Be careful not to overfill the blender as this can cause damage and the ingredients will spill out. The food or liquid should not reach above the maximum capacity of 1.5 L.

Go to [www.saltercookshop.com/Instruction-manuals.html](http://www.saltercookshop.com/Instruction-manuals.html) and search **EK4246** to access the instruction manual for your product.

#### WITH THE TRAVEL BOTTLE

\*To be eligible for the extended guarantee, go to [www.saltercookshop.com](http://www.saltercookshop.com) and register your product within 30 days of purchase.

**STEP 1:** Place the ingredients into the travel bottle.

The crossed out wheellie bin symbol on this item indicates that this appliance needs to be disposed of in an environmentally friendly way when it becomes of no further use or has worn out. Contact your local authority for details of where to take the item for recycling.

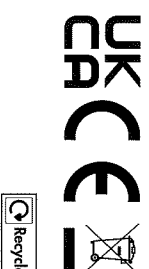
**STEP 2:** Pour a small amount of liquid into the bottle.

Go to [www.saltercookshop.com](http://www.saltercookshop.com) and search **EK4246** to access the instruction manual for your product.

**STEP 3:** Secure the travel bottle blade attachment onto the bottle by twisting it in a clockwise direction.

**STEP 4:** Invert the bottle so that the blade attachment

Go to [www.saltercookshop.com](http://www.saltercookshop.com) and search **EK4246** to access the instruction manual for your product.



Find us on [www.facebook.com/SalterCookshop](http://www.facebook.com/SalterCookshop)

Manufactured by:  
UP Global Sourcing UK Ltd.,  
UK: Manchester OL9 0DD,  
Germany: 51149 Köln,  
MADE IN CHINA.

[www.saltercookshop.com](http://www.saltercookshop.com)